



EDDLUX

FACTORY PROFILE

www.eddlux.com



• ABOUT US	3	• BORDER CONTROL GUARD HOUSE	14
• OIL AND GAS CONTAINER	4	• HIGH SECURITY ARMORY AND EXPLOSIVE VAULT	15
• PREFAB CONTAINER	5	• DEPLOYABLE AMMUNITION AND WEAPON STORAGE	16
• OFFICE UNITS	7	• ACCOMMODATION UNIT	17
• TRAILER CONTAINER	9	• MILITARY- GRADE UNITS	18
• ARMORED CONTAINERS	10	• MODULAR SHOOTING RANGE	19
• BATTERY ENERGY STORAGE SYSTEM	11	• CONTAINER RANGE	21
• SHELTER : SSK 35A	12	• CERTIFICATE	22
• MLA LINED CONTAINER	13		



TABLE OF CONTENTS

www.eddlux.com

ABOUT US

As a member of the Goldman Whites Group, EDDLUX, established in 2005, is dedicated to advancing the field of container manufacturing through a strong emphasis on technical excellence, purposeful innovation, and rigorous attention to detail. We deliver innovative and high-performance container solutions for diverse sectors such as defense, construction, logistics, and border security. With a modern production facility and skilled workforce, we design and produce a wide range of specialized units including oil and gas containers, prefab containers, office units, trailer containers, armored containers, and accommodation units. Our portfolio also includes advanced systems like battery energy storage containers, MLA lined containers, border control guard houses, and deployable ammunition and weapon storage. For military and tactical use, we offer military grade units, modular shooting ranges, container ranges, and shelter units like SSK 35A. Our containers are engineered for strength, efficiency, and adaptability, ensuring reliable performance in every application.

www.eddlux.com



OIL AND GAS CONTAINER



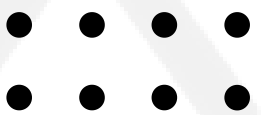
www.eddlux.com



PREFAB CONTAINER



www.eddlux.com





www.eddlux.com



OFFICE UNITS

www.eddlux.com



www.eddlux.com



TRAILER CONTAINER



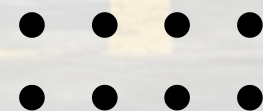
www.eddlux.com

ARMORED CONTAINERS

We specialize in manufacturing high-performance armored containers designed for defense and security applications. Built with military-grade materials, our containers offer superior ballistic protection, blast resistance, and customizable configurations to meet mission-critical requirements.



www.eddlux.com





BATTERY ENERGY STORAGE SYSTEM – BESS IN AN ARMORED CONTAINER

PHYSICAL IT SECURITY

www.eddlux.com



SHELTER : SSK 35A

Fully modular shelter, protects against blast

Shrapnel, heat, FAE and NBC threat

Fully modular, no parts heavier than 12,5 tons

STANAG 2280 (A5/C5/D6) pending

350 mm double-reinforced HPS in walls, roof
and floor. Ventilation with NBC filter

Door , emergency exit, NBC protection

all according to Swedish Civil Contingencies
Agency (MSB) specifications.





**OVER GROUND BALLISTIC
PROTECTED SHELTER**

www.eddlux.com

MLA LINED CONTAINER

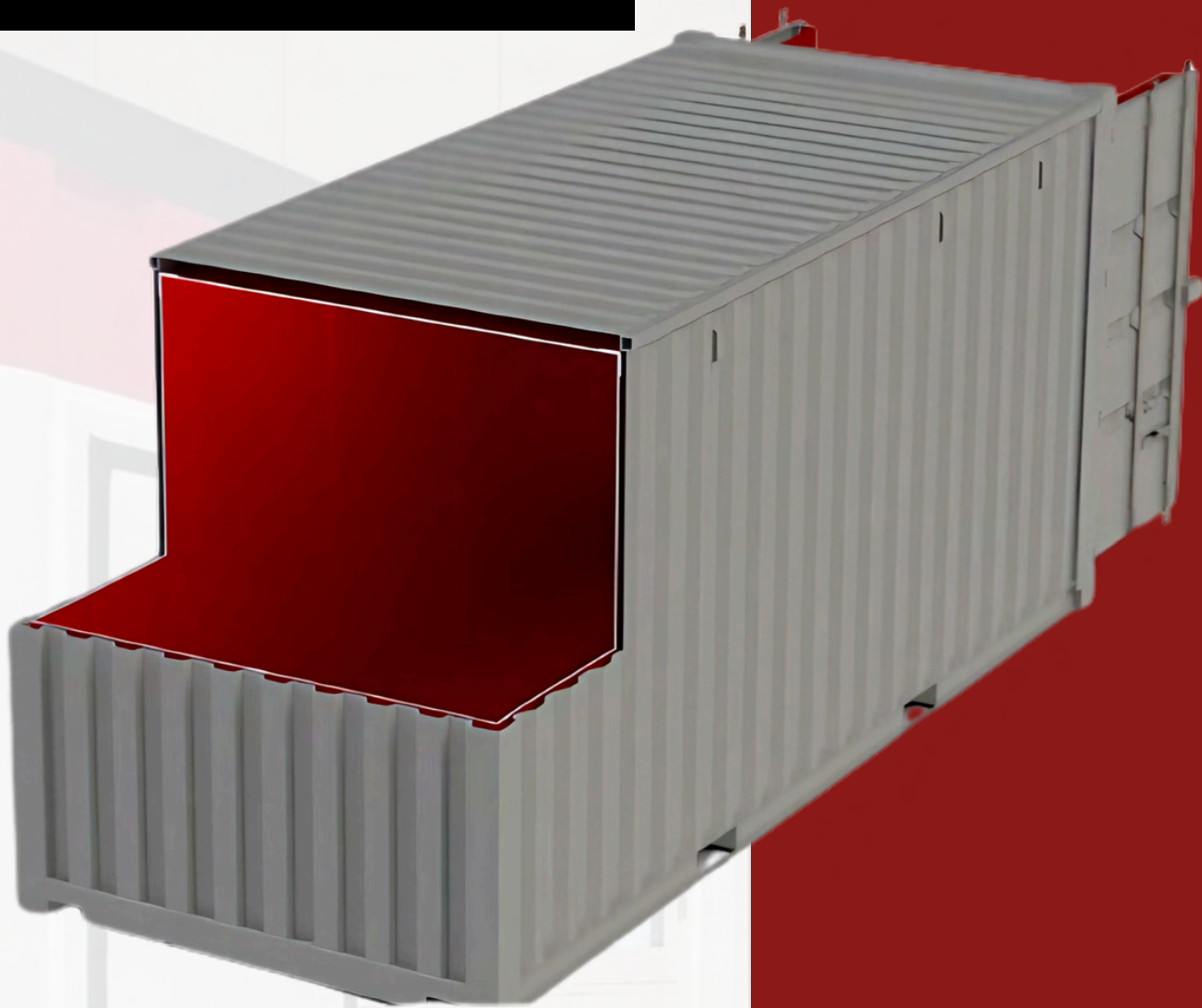
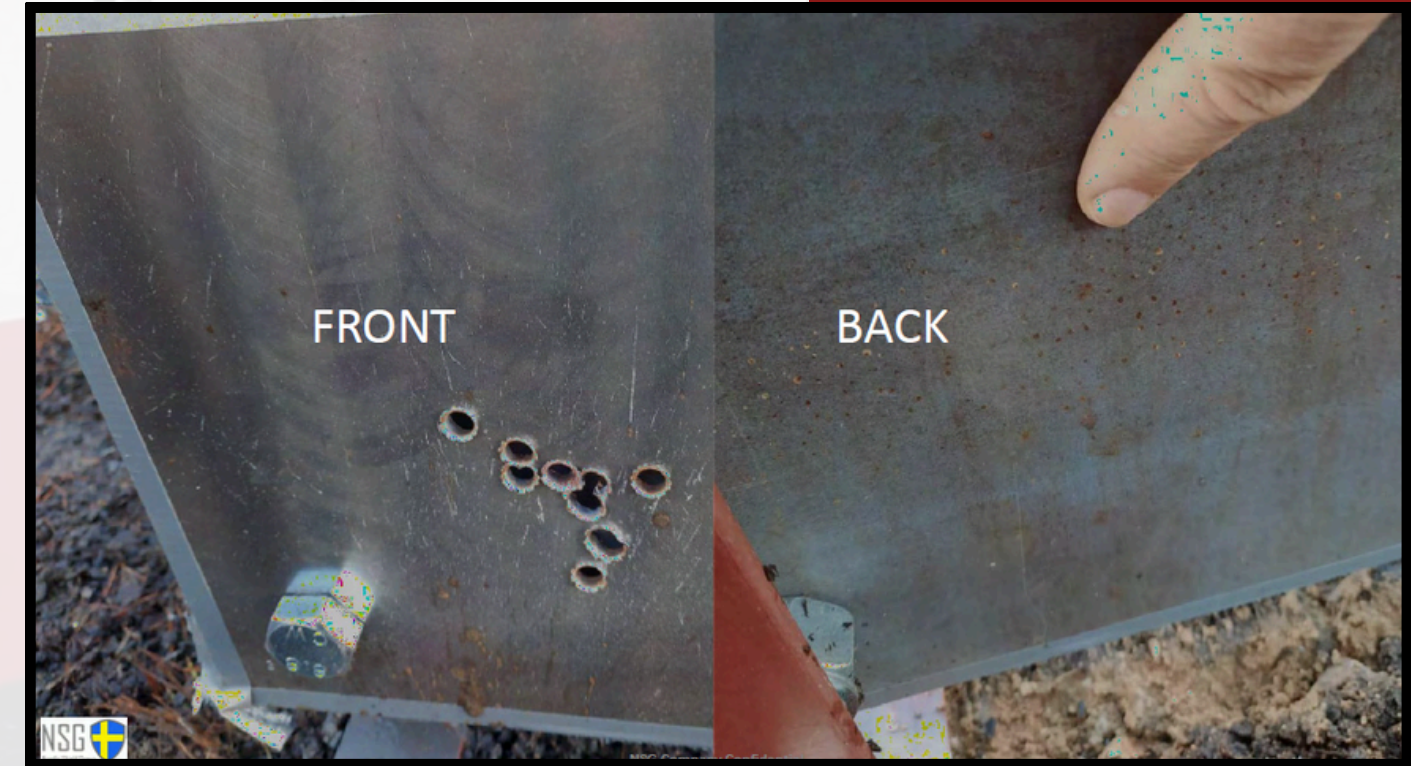
- We use standard containers 8, 10, 20 and 40 ft.
- The containers will be lined inside with MLA
- Can be equipped with different interior solutions

MultiLayer Armor-MLA

BULLET RESISTANCE		
7	FB 7 Stanag	EN 1522 Level >3
BURGLAR RESISTANCE		
	Grade 4-6	EN 1143-1
	Weight for a 20 ft container ~ 6000 kg	
	Cost effective protection	
	Multiple use	

MLA Shooting Test

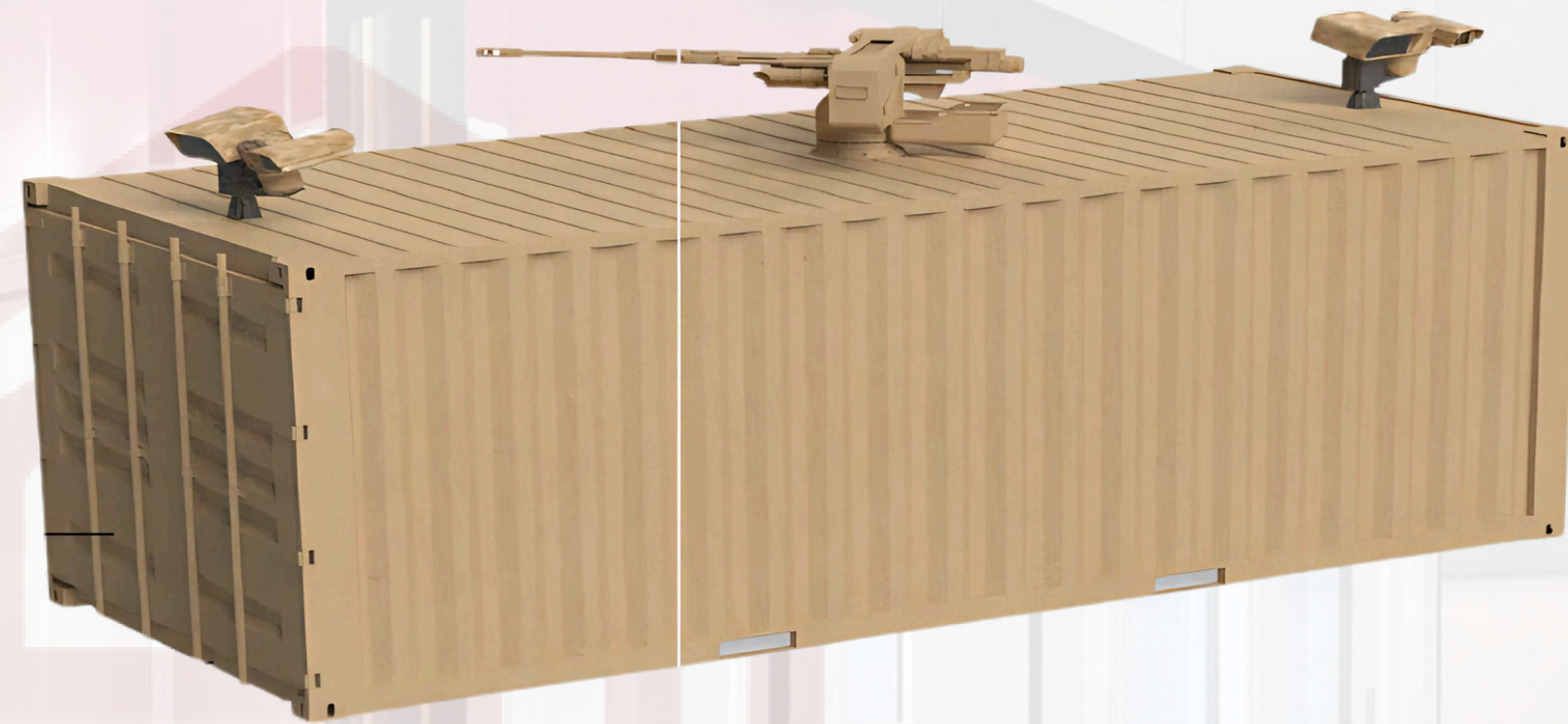
10 rounds, 7,62AP
from 10m →



BORDER CONTROL GUARD HOUSE

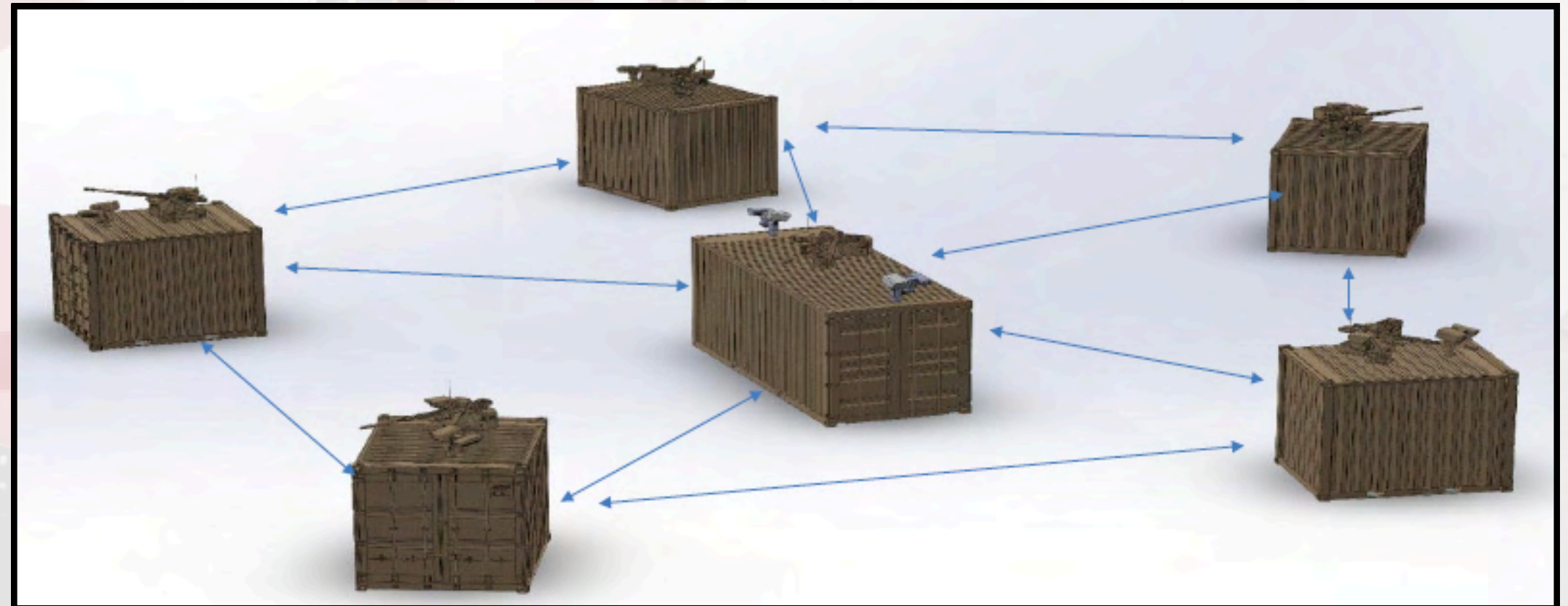
OPTIONS

- Solar panels
- Integrated AC/NBC filter
- Tempest protected
- Different interior options
- Different Camera solutions
- Weapon Station



NETWORK AREA PROTECTION

www.eddlux.com



HIGH SECURITY ARMORY AND EXPLOSIVE VAULT FOR A DEMANDING WORLD.

**The MSV meets the Specification
SS-EN -1143-1 VI and higher**

Protection level:	EN 1143-1 Grade VI
Weight kg:	3000 kg
Outer Dimensions mm:	1620x1060x980
Inner Dimensions mm:	1300x700x700
Looking system:	Keys or keypad
Holes for bolting it to the ground:	Yes
Shelves:	According to customer.



DEPLOYABLE SECURITY STORAGE

Burglar and bullet proof (EN 1143-1 and EN 1522)



www.eddlux.com

DEPLOYABLE AMMUNITION AND WEAPON STORAGE

Less than 2 hours to assemble and 2 hours to disassemble

The storage is tested and classified according to EN-1143-1 grade 6 and up.



ACCOMMODATION UNIT



www.eddlux.com



MILITARY- GRADE UNITS



MODULAR SHOOTING RANGE

Module shooting range block system can be constructed by installing a starting (shooting block) and closing (energy absorbing block) and assigning any number of interconnectors (intermediate block) between them to build up a closed shooting range.

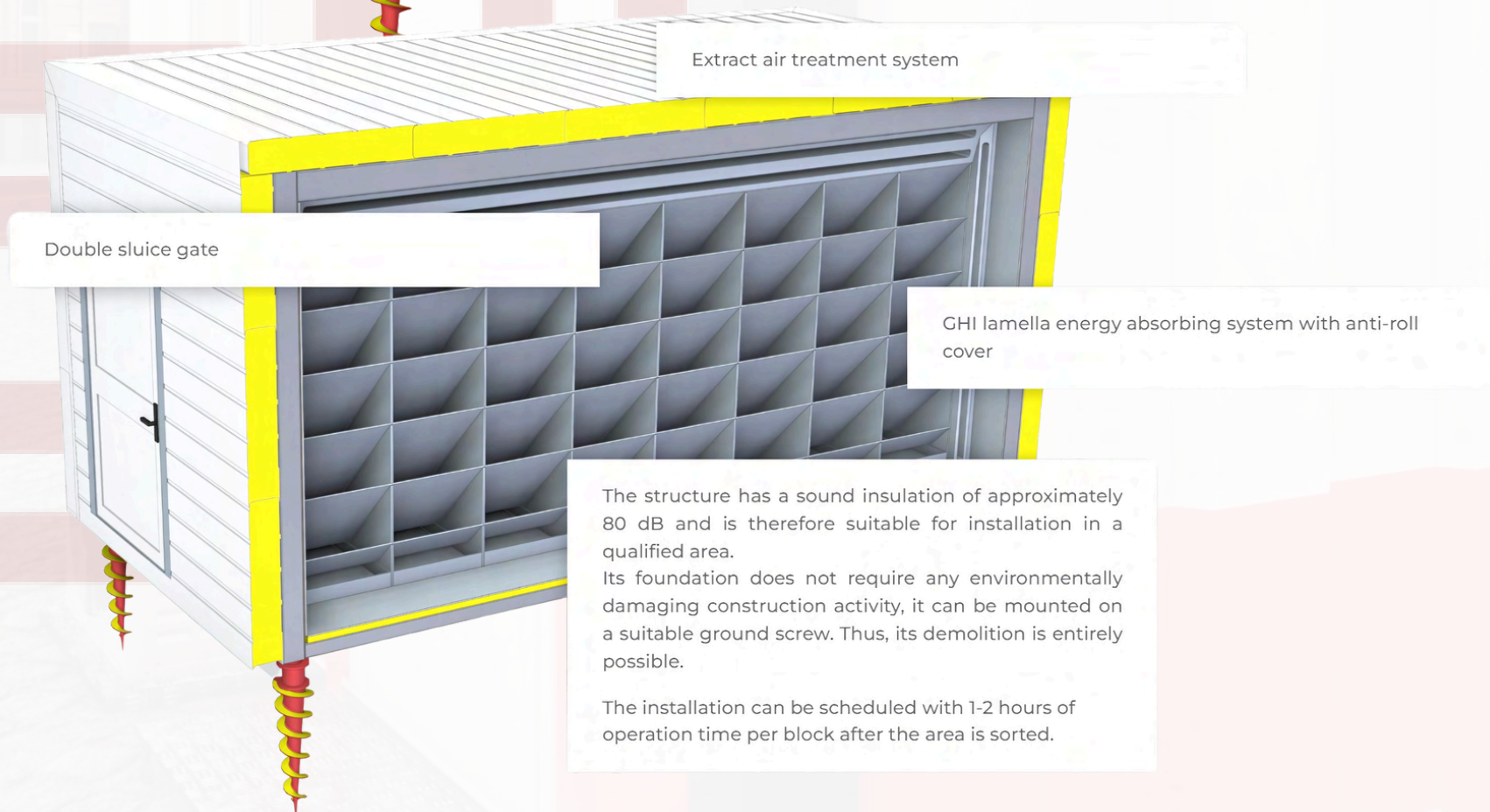
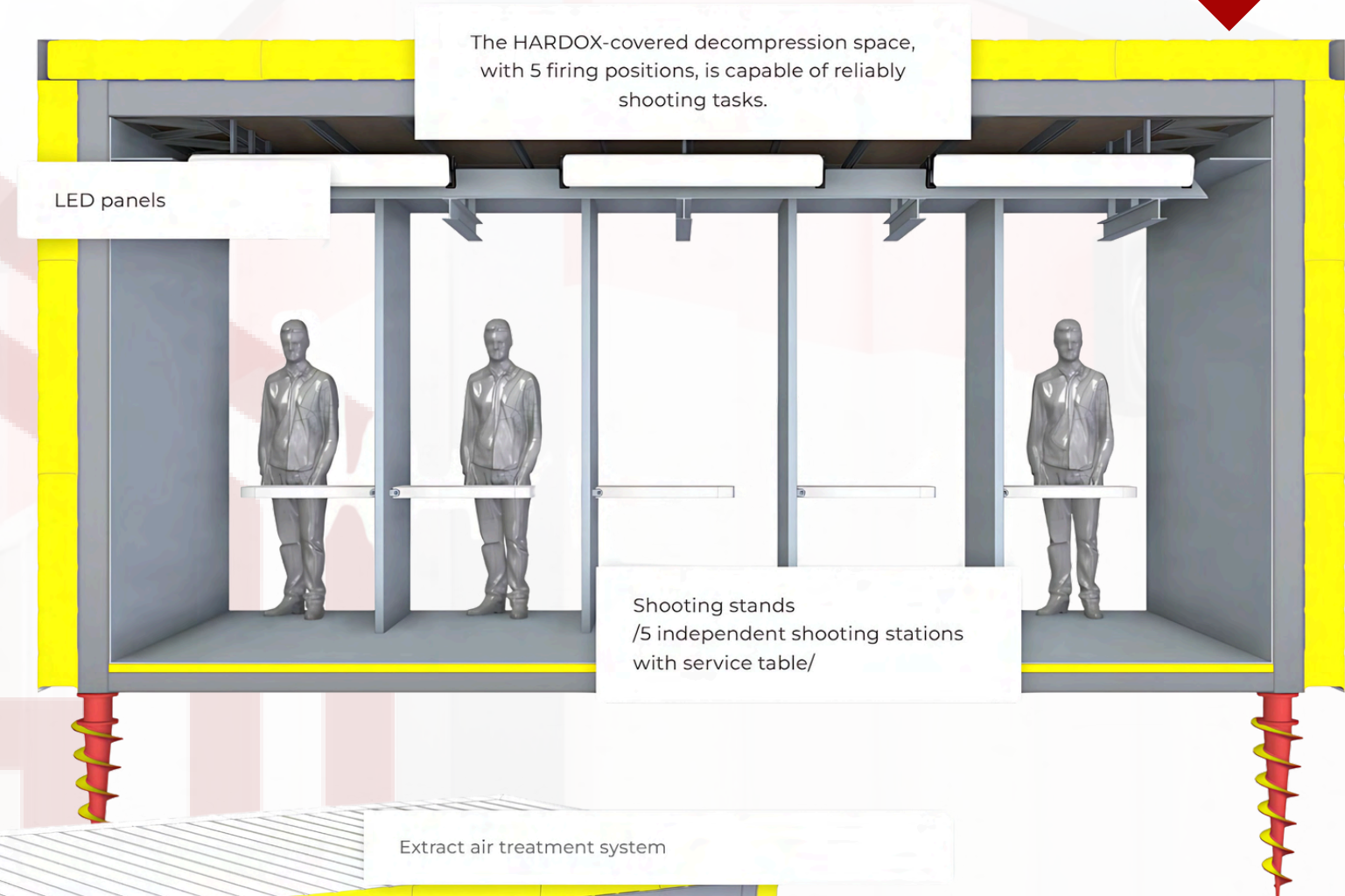
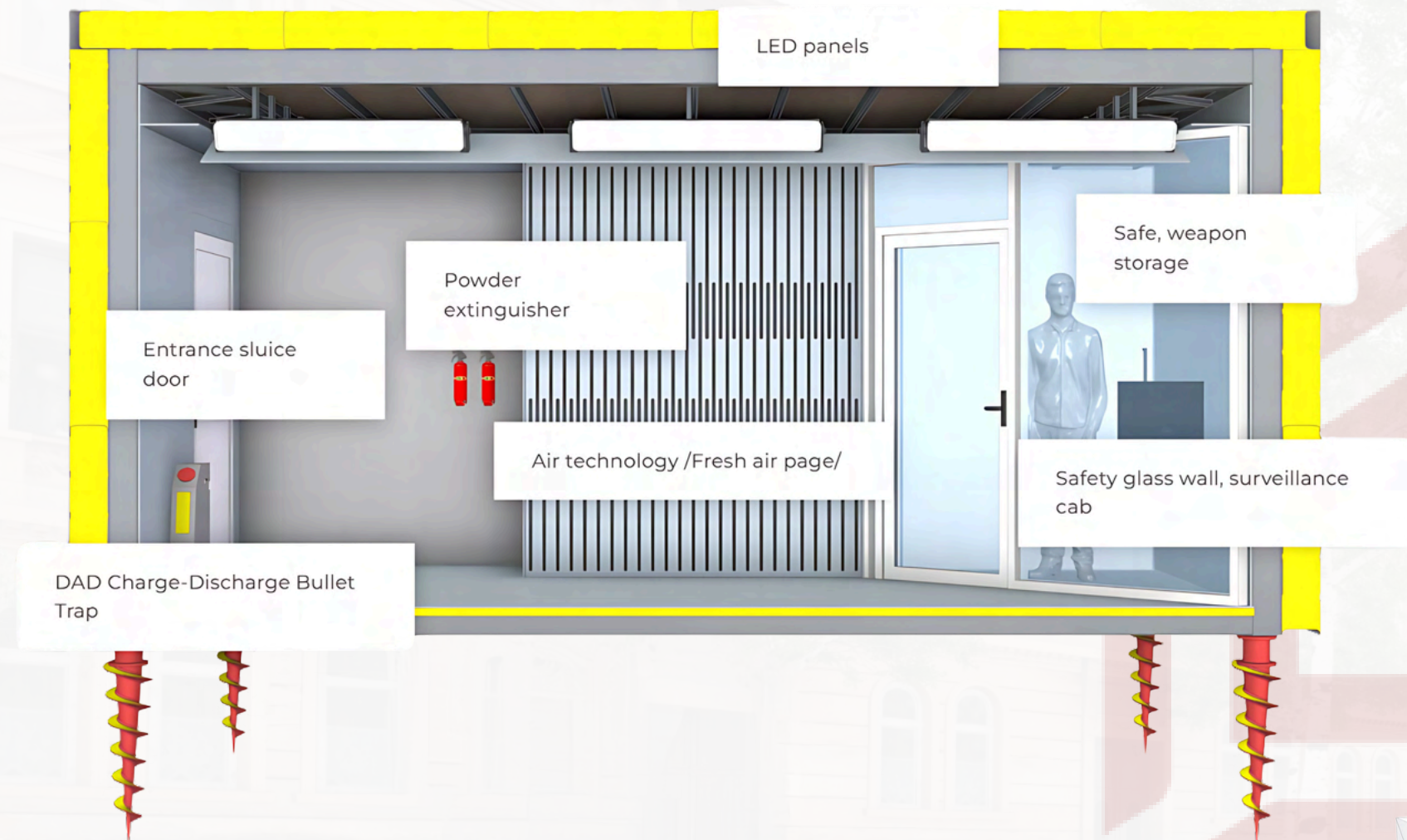
The blocks have a width of 6,300 mm, a height of 3,000 mm and a length of 2,900 mm, so that the design dimension of the facility can be extended every 2900 mm.

energy absorbing
block

intermediate block

shooting block

www.eddlux.com



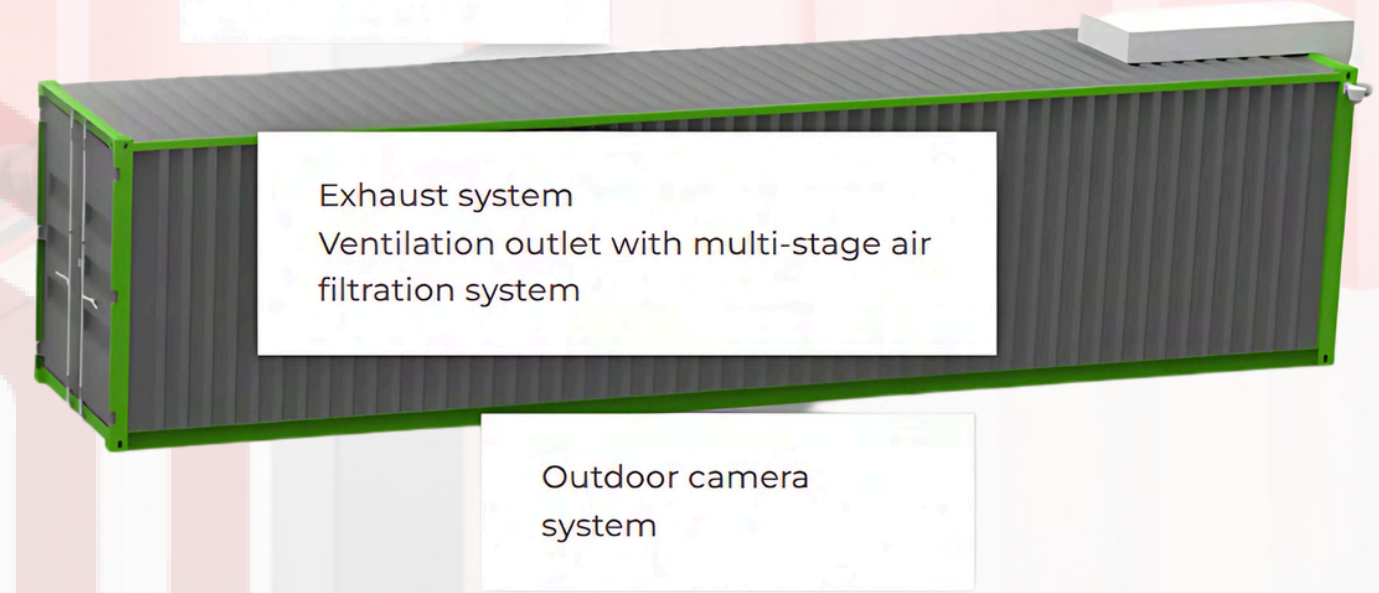
www.eddlux.com

CONTAINER RANGE

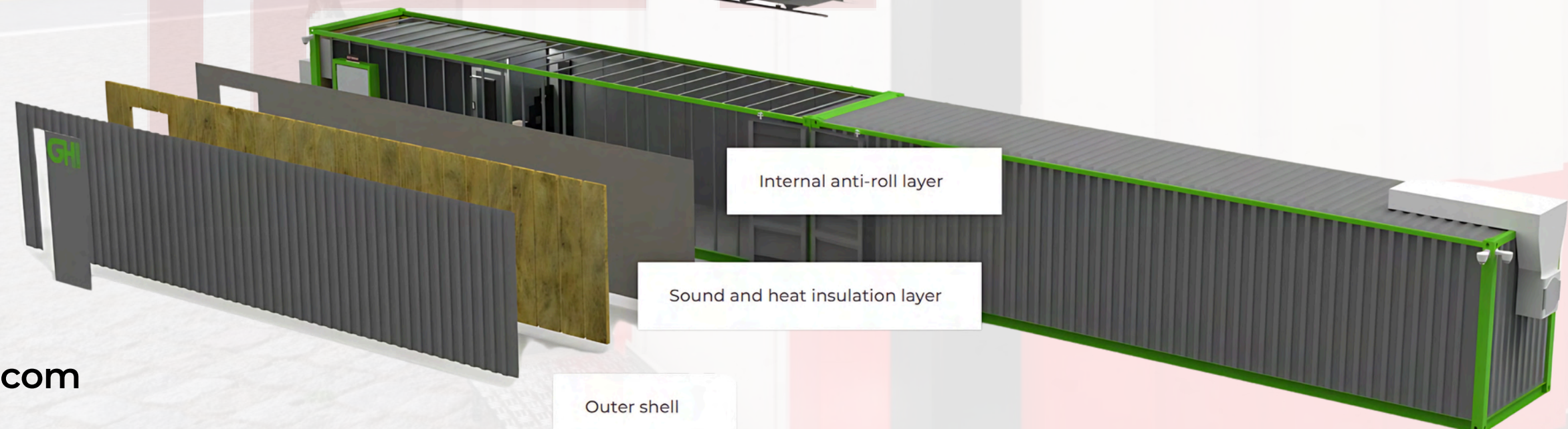
1. container unit



2. container unit



40 'HC Container (2400 * 12000 * 2900 mm) rebuilt with unit-free shooting range. Container units can be sorted to create any execution surface. Suitable for safely conducting tasks with a caliber-independent handgun.



CERTIFICATES





CONNECT WITH US.



+971-47-700-871



info@gwgroup.ae
info@eddlux.com



www.gwgroup.ae
www.eddlux.com



Saih Shuaib 2 St., Dubai Industrial
City, Jebel Ali, Dubai, UAE



GOLDMAN WHITES GROUP